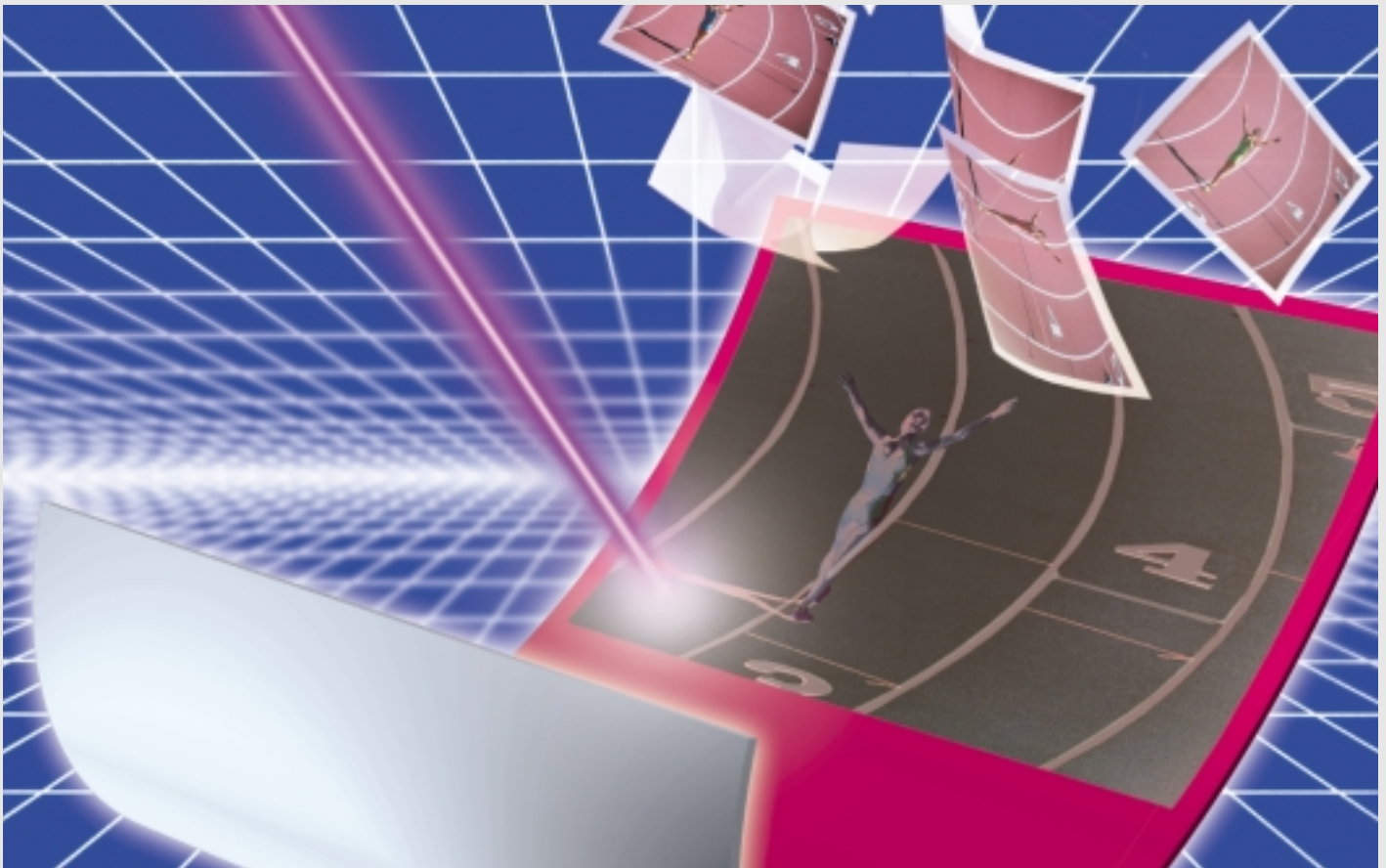


## **SDP- $\alpha$ V Silver Digiplate Alpha Violet**

CTP Metal Plate System

**Get into the world of CTP with Mitsubishi's Silver Digiplate Alpha Violet Aluminium plates.**



- **High-speed exposure due to Violet Laser diode technology**
- **Economical CTP platesetting system**
- **Bright yellow room handling without darkroom**
- **Low maintenance**
- **Low chemical consumption for plate processing**
- **Ecological processing system**
- **Fast roll-up and clean running of the plate**
- **High run length**
- **Same press handling as for conventional metal plates**
- **High quality and consistency**

# Silver Digiplate Alpha Violet

## Technical Specifications

<b>Plate Technology:</b>	Silver halide technology, high sensitivity, positive working, exposure with violet laser diode
<b>Plate Base:</b>	Anodized aluminium
<b>Plate Gauge:</b>	0.15 mm, 0.20 mm, 0.24 mm, 0.30 mm 0.006", 0.008", 0.010", 0.012"
<b>Photographic Sensitivity:</b>	400-430 nm, 3 µJ/cm <sup>2</sup> at 410 nm
<b>Room Light Condition:</b>	Yellow-gold cut-off 500 nm Amber-yellow cut-off 550 nm
<b>Screen Range/Resolution:</b>	Up to 300 lines/inch, 2%-98% (depending on platesetter)
<b>Run Length:</b>	Up to 200,000 sheets (depending on platesetter and printing conditions)
<b>Processing Procedure:</b>	Developer, Wash-off with Stabilizer, Gum Closed System with filters. Fresh water supply not required.
<b>Platesetter:</b>	Every automatic and manual platesetter with violet light source

## P-Alpha 880 Processor for Silver Digiplate Alpha System

### Technical Specifications

<b>Dimensions:</b>	1,220 mm (W) x 1,190 mm (D) x 1,110 (H)
<b>Plate Width:</b>	10-88 cm
<b>Plate Length:</b>	34-103 cm
<b>Processing Speed:</b>	2 cm/s
<b>Processor System:</b>	4-bath, Development, Wash 1 (with brush), Wash 2, Gum, Filter system
<b>Developing Temperature:</b>	Developer: 22°C (72°F) Stabilizer: 32°C (90°F)
<b>Replenishment Rate:</b>	Developer: 150 ml/m <sup>2</sup> (0.5 oz/ft <sup>2</sup> ) Stabilizer: 150 ml/m <sup>2</sup> (0.5 oz/ft <sup>2</sup> )
<b>Power Consumption:</b>	2850 Watt
<b>Power Requirements:</b>	180-240 VAC, 50-60 Hz, 16 Amps
<b>Optional:</b>	Interface for different platesetters



Specifications are subject to change and modification without notice.

Trademarks and registered trademarks used in this brochure are property of their respective owners.

## MITSUBISHI PAPER MILLS LIMITED

Head Office: Shin-Nisseki Bldg., 7th floor

No. 4-2, Marunouchi 3 chome, Chiyoda-ku, Tokyo, Japan  
Tel. + 81-3-3213-3744 Fax + 81-3-3214-3976

<http://web.infoweb.ne.jp/mpm>

Mitsubishi Imaging (MPM), Inc.  
555 Theodore Fremd Avenue, Rye, N.Y. 10580, USA

Tel. + 1-914-925-3200 Fax + 1-914-921-2495  
<http://www.mitsubishimaging.com>

Mitsubishi International GmbH  
Graphic Art Materials Division  
Kennedydamm 19, D-40476 Düsseldorf, Germany

Tel. + 49-211-4397-369 Fax + 49-211-4397-461  
<http://www.mig.de>

Mitsubishi Paper GmbH  
Wiesenstr. 21  
D-40549 Düsseldorf, Germany

Tel. + 49-211-56849-0 Fax + 49-211-56849-23  
<http://www.mitsubishi-paper.de>