

Application Scope

Our machines find extensive application across various industries, including packaging of pharmaceutical, food, cosmetic, cigarette, hang tag, electronics and other consumer products.



Food Packaging Box



Medicine Packaging Box



Tobacco Packaging Box



Cosmetic Packaging Box

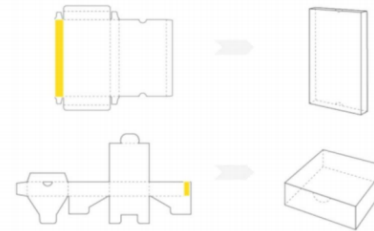


Hangtag / Label

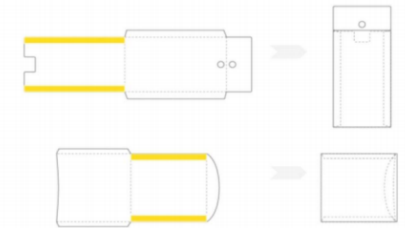


Consumer Packaging Box

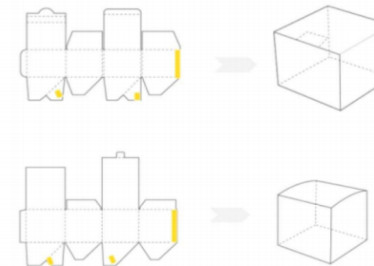
Linear / Straight Line Box



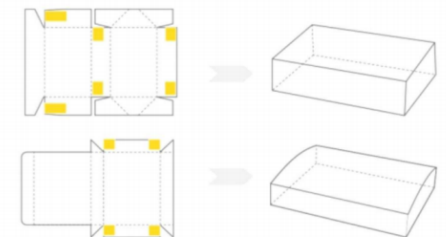
CD Box



Crash Lock Bottom Box



4/6 Corner Box



Sinhosun Stripping Blanking Machine Family

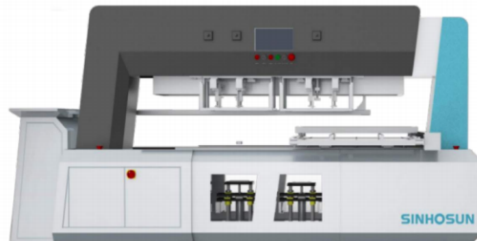
SH-1020S Double Heads Stripping Blanking Machine (Without Robotic Arm)



SH-1020D Single Head Stripping Blanking Machine (Without Robotic Arm)



SH-1020SJN Double Heads Stripping Blanking Machine with Robotic Arms Conveyor and 90° Corner



SH-1020DJN Single Head Stripping Blanking Machine with Robotic Arm Conveyor and 90° Corner



SH-1020SPD Double Heads Stripping Blanking Machine with Robotic Arms and Paper Collecting & Palletizing



SH-1020DPD Single Head Stripping Blanking Machine with Robotic Arm and Paper Collecting & Palletizing



Double Heads Stripping Blanking Machine with Robotic Arms and Paper Collecting & Palletizing

SH-1020SPD

MAIN FEATURES

1. Remove waste paper after Die Cutting, replace manual blanking stripping and make a higher quality of the finished product.
2. Handling 50-85mm thickness pile of paper each time, 8000-10000 sheets can be done within an hour. (Vary from different product)
3. Easy to debug and easy to adopt new bottom mold, it takes around 10-20 minutes
4. Only need one person to operate, the machine achieve the automatic stripping till finished product collecting and stacking.



PARTIAL MECHANISM FUNCTION DESCRIPTION

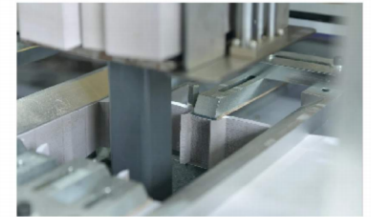
Appearance

- Based on the traditional pin type stripping machine in the market, our stripping machine have upgraded and it looks a little bit different.
- Finish in gantry-style design, integrate with best components for a grand structure and stable performance.



Module Stripping

- Bottom mould for blanking stripping job instead of traditional Pin blanking stripping.
- Around 30 seconds to replace the bottom mold, greatly reduce debugging time and improve stripping blanking efficiency.
- Suitable for various blank sizes and product designs, e.g. Lock- bottom box, Paper cup, Straight line box, Special shaped box, ect.



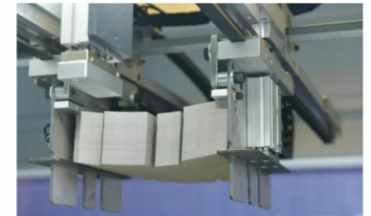
Paper-Driving

- Move by special paper driving section, paper sheet will not touch machine platform directly, protect product from getting dirty and damaged.
- Adopt high precision ball screw and linear guide rails for accurate positioning.
- Anti-collision Rubber Buffers on both side to secure safe production.



Manipulator(Robotic Arm)

- Automatic clamp the finished products and deliver to the conveyor belt. Replace manual receiving and improve production efficiency.



Double Blanking Stripping Heads

- Utilize double blanking stripping heads to achieve waste removal for different layouts.



Paper Collecting System

- Whole row of products will be collected neatly and orderly. Realizing automatic collecting and palletizing.
- Optional Separation Paper to separate certain piles(depends on setting) to avoid finished pile fall down.



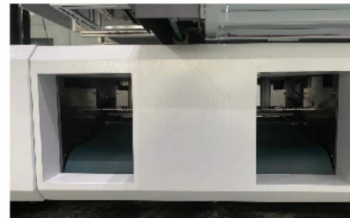
Operation System

- PLC control system, easy setting, user-friendly.



Waste Discharge Channel

- Paper scraps will be discharged through the waste clearance channel automatically, protect product, save cleaning time and keep machine tidy.



Safety Detective Sensor

- Equipped with detective sensor to prevent worker injuries and machine damage.



TECHNICAL SPECIFICATION

Model	SH-1020SPD	SH-1020SPD (Extended model)
Max. Paper Size /mm	1020 x 960	1060 x 960
	Can be extended to 1080*960	
Min. Paper Size /mm	300 x 300	300 x 300
Max. Mark Stripping Size /mm	450 x 350	650 x 500
Min. Mark Stripping Size /mm	30 x 30	100 x 100
Size of Robot Reclaimer /mm	80X80 – 350 x 350	100 x 100 – 480 x 380
The Paper Hight /mm	50-80	50-80
Mark Stripping Speed (Times/min)	1~18	1~18
Palletizing Volume /mm	950 x 950 x 1300	950 x 950 x 1300
Max. Working Pressure /T	2.5	2.5
Overall Power /KW	9	11
Pressure (Bar)	6~8	6~8
Overall Weight /Kg	4100	4400
Overall Dimension (LxHxW) /mm	5300 x 3200 x 2200	5670 x 3200 x 2200

Double Heads Stripping Blanking Machine with Robotic Arms Conveyor and 90 Degree Corner

SH-1020SJN

MAIN FEATURES



1. Suitable for various Folding boxes and E/F corrugated boxes in different categories like medical, food, cosmetic, cigarette, electronics and other consumer products.
2. Working speed about 18-20times/min (vary from products), increase Die cutting efficiency from 10%-30%.
3. Automatic robotic arm coupled with 90 degree receiving corner, improve working efficiency and reduce labour cost.

TECHNICAL SPECIFICATION

Model	SH-1020SJN	SH-1020SJN (Extended model)
Max. Paper Size /mm	1020 x 960	1060 x 960 Can be extended to 1080*960
Min. Paper Size /mm	300 x 300	300 x 300
Max. Mark Stripping Size /mm	450 x 350	650 x 500
Min. Mark Stripping Size /mm	30 x 30	100 x 100
Size of Robot Reclaimer /mm	80 x 80 – 350 x 350	100 x 100 – 480 x 380
The Paper Hight /mm	50-80	50-80
Mark Stripping Speed (Times/min)	1~18	1~18
Max. Working Pressure /T	2.5	2.5
Overall Power /KW	7	9
Pressure (Bar)	6~8	6~8
Overall Weight /Kg	2400	2700
Overall Dimension (LxHxW) /mm	4395 x 2000 x 2000	4765 x 2000 x 2000